

DBS Tips and Tricks

Product Information for DBS Users

January
2010

DATAVIS

7 Francis St
Tighes Hill, Newcastle
NSW 2297
Australia

P: 61 2 4969 7015
F: 61 2 4969 7016
www.datavis.com.au

Dear DBS Users,

2010 is shaping up as an exciting year for DBS development.

To kick of the new year, Datavis is pleased to advise the release of DBS Designer LITE. DBS Designer LITE has most of the functionality of DBS Designer, but will not require a connection to the DBS database. DBS Designer LITE is targeted at those operations only focused on Blast Design only and not the Drill and Blast management process. DBS Designer LITE will not be able to connect to the full DBS system.

If you are interested in a cost effective blast design solution and you would like more information regarding DBS Designer LITE, please contact our office.

John Hutchings
Director
Datavis

In this issue:

DBS Driller, a logger solution for drills without a Drill Monitoring System.

DBS Driller, a logger solution for drills without a Drill Monitoring System.

DBS Link version 3.70

Drill Monitoring Systems (DMS), such as AQUILA, Leica DrillNav and MODULAR, provide a wealth of drilling information including blasthole position, depth and rock strata data. However, they are expensive, require a lot of support and are usually installed as part of a larger Fleet Management System. There are situations when a full DMS cannot be justified.

Datavis now provides a logger solution (called DBS Driller) for drills which meets this requirement and is fully integrated with the DBS product.

DBS Driller is designed to run on a Tablet/Notebook PC running Windows XP, Vista or Win7. It provides a map style interface to identify and locate holes. Although DBS Driller has no physical connection to the drills systems, DBS Driller is designed to collect all the relevant shift based data both for activity information and hole drilling.

Below are some screen dumps of the DBS Driller interface.

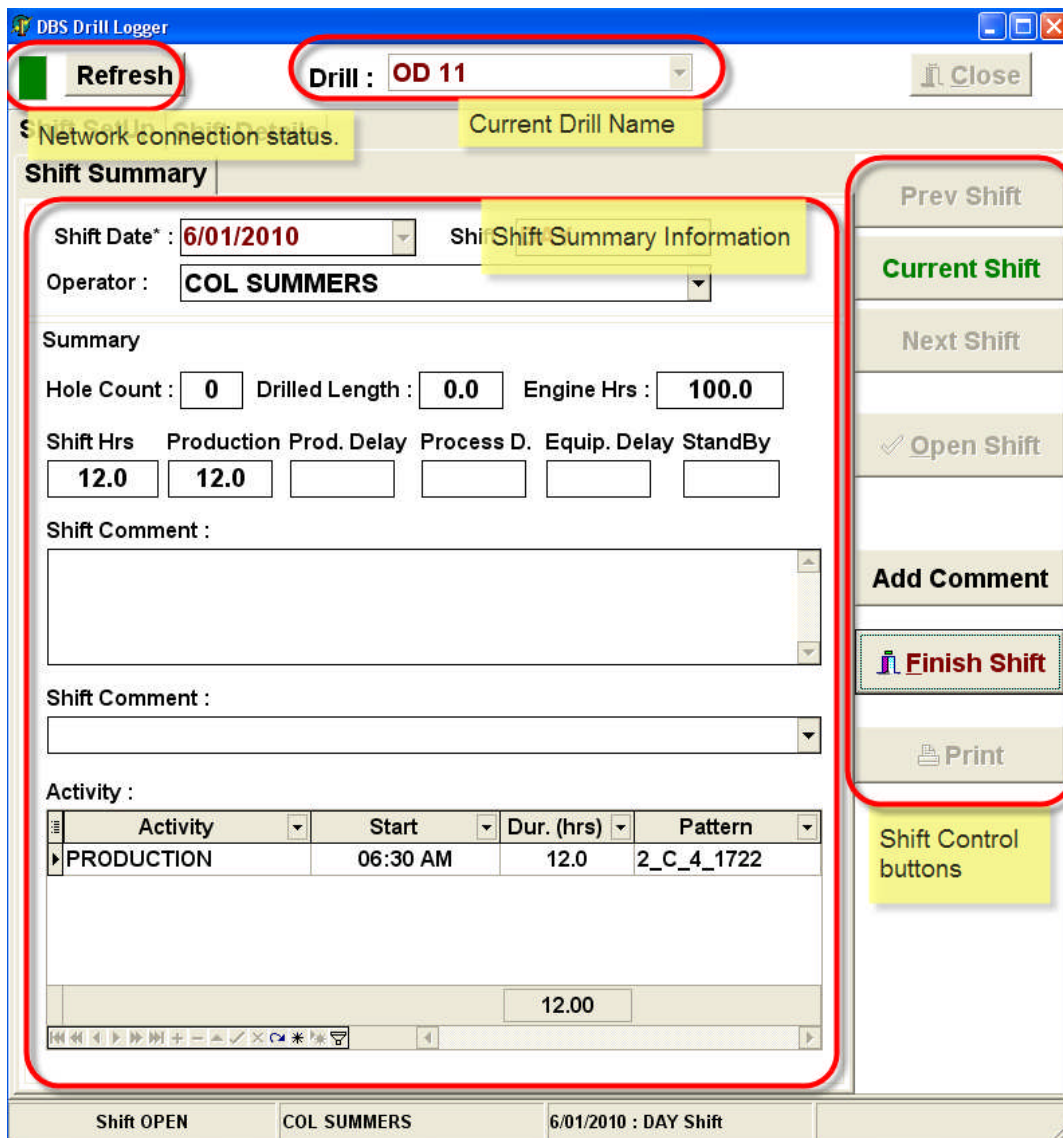


Fig. 1 DBS Driller Main Logger screen with Shift Summary view.

Fig. 2 DBS Driller Map View and Hole Drilling screen.

DBS Drill Logger

Refresh Drill : OD 11 Close

Shift SetUp Shift Details Current Hole Design Data

Pattern : 2 C 4 1722 Current Pattern Make Current

Design Hole Data ID: G64 D: 40.1 A: 0.0 B: 90.6

Shift Activity Pattern Map Map Set Up

Start Hole

Add Strata

Add Redrill

Add New Hole

Move Hole

Change Angle

Drilling Controls including: Start/Stop hole Redrills and New Holes

Current pattern being drilled. Plan includes scene information (crest and toe lines etc).
Operator selects the hole to be drilled from the map.

Shift OPEN COL SUMMERS 6/01/2010 : DAY Shift

Fig 3. DBS Driller Activity screen.

DBS Drill Logger

Refresh Drill : OD 11 Close

Shift SetUp Shift Details

Shift Activity Map Set Up

Activity	Activity Type	Activity Start	Duration (
New Activity			
PRODUCTION	Production	6/01/2010 6:30:00 A	2.92
OPERATING DELAY	Production De	6/01/2010 9:25:02 A	9.08

Add Activity

Shift Activity information. Delays preset in the DBS Database.
Logger automatically calculate durations.

Update