

DBS Tips and Tricks

Product Information for DBS Professionals

February
2010

DATAVIS

7 Francis St
Tighes Hill, Newcastle
NSW 2297
Australia

P: 61 2 4969 7015
F: 61 2 4969 7016
www.datavis.com.au

Dear DBS Professionals,

Datavis is very pleased to announce that we have signed an agreement with [Thunderbird Mining Systems \(www.tbirdpac.com\)](http://www.tbirdpac.com). Thunderbird will now distribute and support Datavis products into North America. Thunderbird is a very experienced and well respected company who have been supplying drilling instrumentation to the mining industry for over 20 years. We are very excited about this relationship as the synergies between our two companies will also open new opportunities for Datavis. Watch this space for more news in the coming months.

One of the time consuming parts of using DBS is the Check In/Out process. This is due to the large amount of data which must be moved into and out of the database in one go. Datavis has an ongoing development project to try and eliminate as many of the Check In and Out steps as possible. In theory, only one Check In should be required. After the data is in the database, it can be edited and updated in situ.

In this issue we will demonstrate a significant step in this direction which will be available in release 3.71 (out by the end of February).

John Hutchings
Director
Datavis

In this issue:

Creating Charging Instructions from within in DBS Manager.

Creating Charging Instructions in DBS Manager

DBS version 3.71

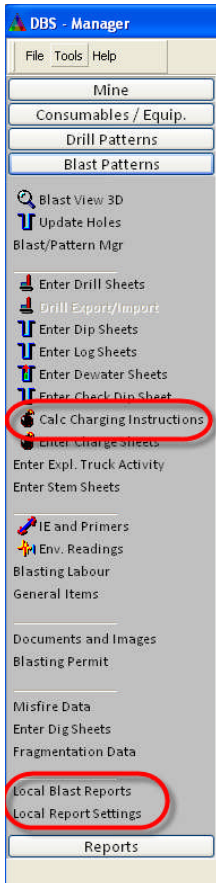
In earlier versions of DBS the work flow to produce Charge Sheets was

- **Check In the designed blast to the DBS Manager**
- **Enter Drilling and Dipping data via the sheet entry forms or imported from DMS/Loggers**
- **Check Out the blast**
- **Run the Charging Rules to create the Charging Instructions for the Blast**
- **Print the Charging Sheets**
- **Check In the Blast.**

As you know the Check In and Check Out process are slow as there is a lot of data to collect and collate. Our aim is to minimize the number of Check In/Out operations required to process a blast.

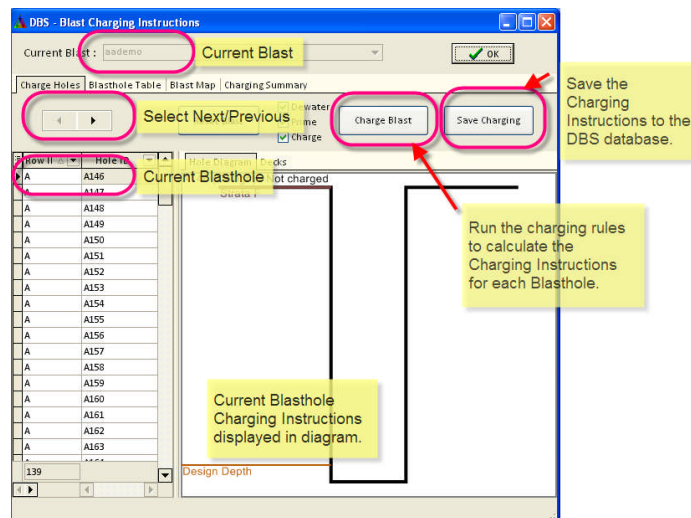
To this end we now have modified the DBS Manager so that the work flow becomes

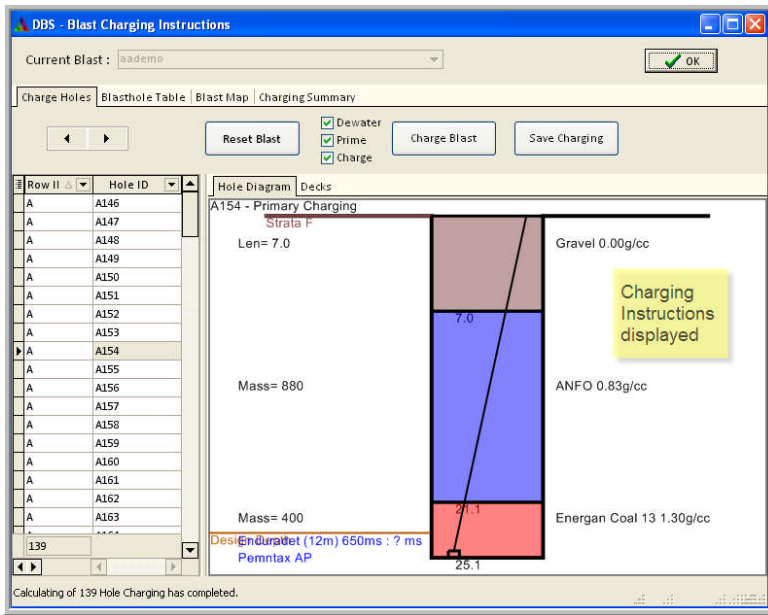
- **Check In design blast to the DBS Manager**
- **Enter Drilling and Dipping data via the sheet entry forms or imported from DMS/Loggers**
- **Run the Charging Rules to create the Charging Instructions for the Blast from DBS Manager**
- **Print the Charging Sheets from DBS Manager**



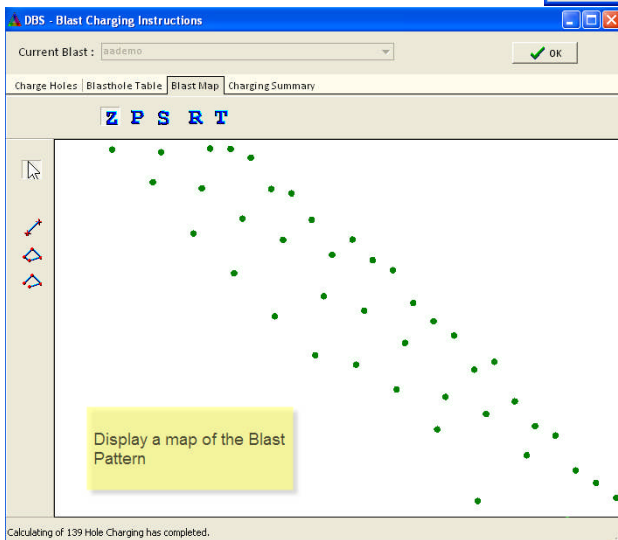
The Running of the Charging Rules and the Printing of the Charging Sheets are both completed from within the DBS Manager, thus eliminating a Check Out and a Check In step, saving you a heap of time. The only requirement is that the Charging Rules have been loaded into the Blast before the Blast is Checked In for the first time.

Following are a number of screen shots from the new interface.





Hole ID	Depth	Design Depth	Dia	Burden	Spacing	Bearing	Angle	Back Fill	Sub Drill
A146	25.6	24.1	0.3	10.0	8.0	0.0	0.0	0.0	0.0
A147	24.4	24.0	0.3	10.0	8.0	0.0	0.0	0.0	0.0
A148	24.4	23.9	0.3	10.0	8.0	0.0	0.0	0.0	0.0
A149	26.0	23.8	0.3	10.0	8.0	0.0	0.0	0.0	0.0
A150	25.8	23.7	0.3	10.0	8.0	0.0	0.0	0.0	0.0
A151	25.3	23.6	0.3	10.0	8.0	0.0	0.0	0.0	0.0
A152	25.6	23.5	0.3	10.0	8.0	0.0	0.0	0.0	0.0
A153	23.5	23.4	0.3	10.0	8.0	0.0	0.0	0.0	0.0
A154	25.1	23.3	0.3	10.0	8.0	0.0	0.0	0.0	0.0
A155	24.1	23.2	0.3	10.0	8.0	0.0	0.0	0.0	0.0
A156	23.7	22.9	0.3	10.0	8.0	0.0	0.0	0.0	0.0
A157	25.2	23.0	0.3	10.0	8.0	0.0	0.0	0.0	0.0
A158	23.2	22.8	0.3	10.0	8.0	0.0	0.0	0.0	0.0
A159	25.1	22.9	0.3	10.0	8.0	0.0	0.0	0.0	0.0
A160	24.0	22.9	0.3	10.0	8.0	0.0	0.0	0.0	0.0
A161	23.5	22.8	0.3	10.0	8.0	0.0	0.0	0.0	0.0
A162	24.3	22.8	0.3	10.0	8.0	0.0	0.0	0.0	0.0
A163	24.7	22.7	0.3	10.0	8.0	0.0	0.0	0.0	0.0
A164	23.5	22.7	0.3	10.0	8.0	0.0	0.0	0.0	0.0
A165	24.2	22.6	0.3	10.0	8.0	0.0	0.0	0.0	0.0
A166	23.4	22.6	0.3	10.0	8.0	0.0	0.0	0.0	0.0
A167	24.0	22.5	0.3	10.0	8.0	0.0	0.0	0.0	0.0
139									



If you would like to know more about this functionality, or would like to get it going at your site, contact us.

As this is still under construction, if you have any ideas which you think will improve this interface get them in to us.