

April 2010



[www.tbirdpac.com](http://www.tbirdpac.com)



[PrismMining.com.au](http://PrismMining.com.au)

### DATAVIS

7 Francis St  
Tighes Hill, Newcastle  
NSW 2297  
Australia

P: 61 2 4969 7015  
F: 61 2 4969 7016  
[www.datavis.com.au](http://www.datavis.com.au)

Dear DBS Professionals,

### Datavis increases its support network.....

Datavis always puts a high priority on the support of DBS products to our clients. We now have additional support channels:

**Prism Mining**, a group of experienced Drill and Blast engineers, offer a number of services including training, auditing and relief or support personnel. Prism Mining write support and technical material for DBS products and can fully support DBS products including the supply of qualified engineers for relief and stand in work using DBS. Visit their web site for more information.

**Thunderbird Mining Systems**, the North America distributor of DBS, support the installation, configuration and training of DBS products in North America. Visit their web site for more information.

Datavis and Prism Mining offer a range of training and auditing options including site based and off site training courses, self paced training packages and information based newsletters like this.

**If you feel you are lacking some DBS skills, you have a new starter needing DBS training, you feel you just aren't getting enough out of DBS or you want to "lift the bar" in your Drill and Blast, contact us.**

John Hutchings  
Director  
Datavis

### In this issue:

Importing Dipping Data from a Microsoft Excel spreadsheet.

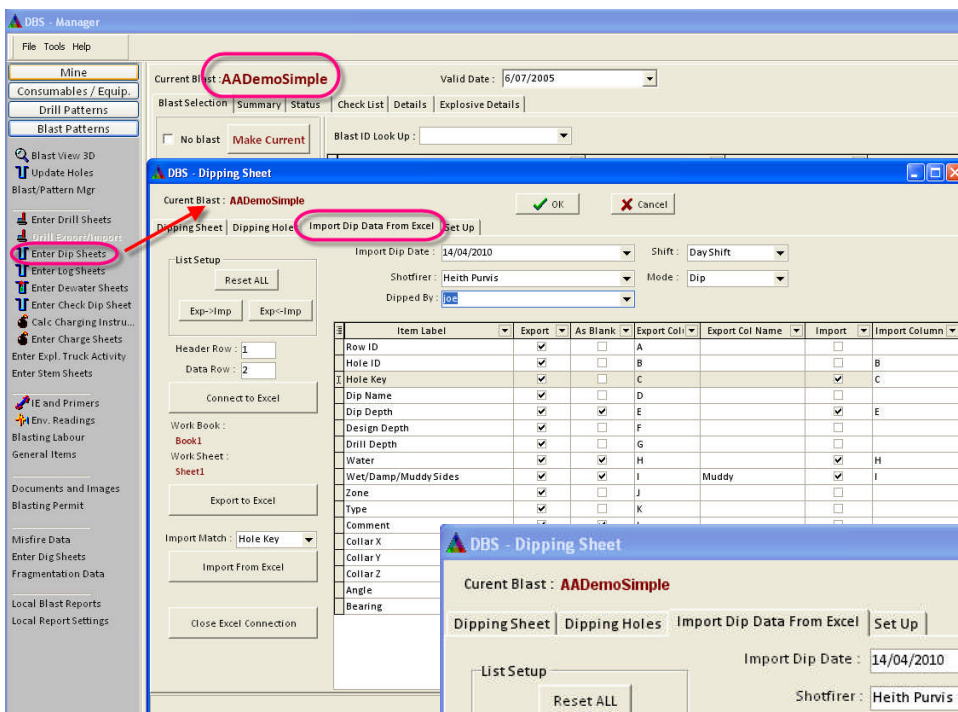
# Importing Dipping Data from a Microsoft Excel spreadsheet.

## V3.70 and later

Microsoft Excel spreadsheet is a good product for doing spreadsheets: entering information, copying data and converting data. Most people these days have the skills needed to use spreadsheets. For some time DBS has supported a direct link to Excel spreadsheets which means that DBS can read and write data directly to a spreadsheet. Our first implementation was to be able to export and import blasthole data to a spreadsheet. Some of our customers use this feature for updating hole data directly.

DBS now supports a link to Excel for the purpose of exporting dip data and then importing the data as collected back into the DBS database. The benefit of this import will be that the data will be stored in Dip sheets, which will also track who and when the data was collected. It also means you can dip the holes multiple times and keep all the data collated, so you can review the dipping history.

This section will give you an overview of this new function.

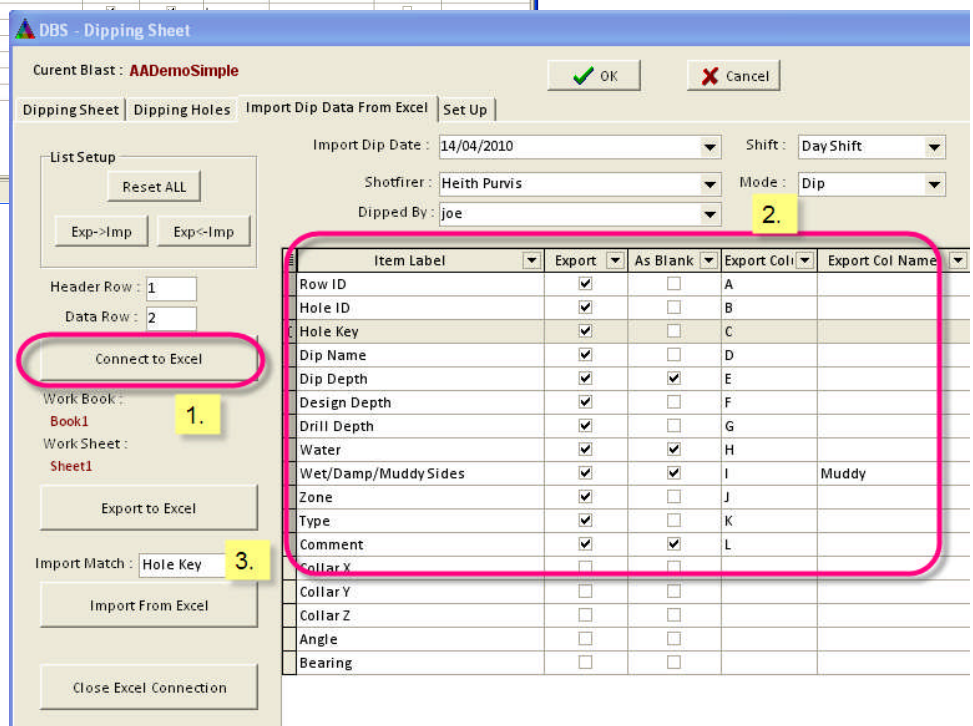


**Access the Excel Import/Export function from the DBS Manager.**

- Make a Blast/Drill Pattern current
- Navigate to the "Enter Dip Sheets data form
- Navigate to the Import Dip Data Tab.

### To export data to a spreadsheet..

1. Press the "Connect To Excel" to form a link to a spreadsheet.
2. Fill in the data as required to define the export data.
3. Press the "Export to Excel" button to push the data to the connected spreadsheet.

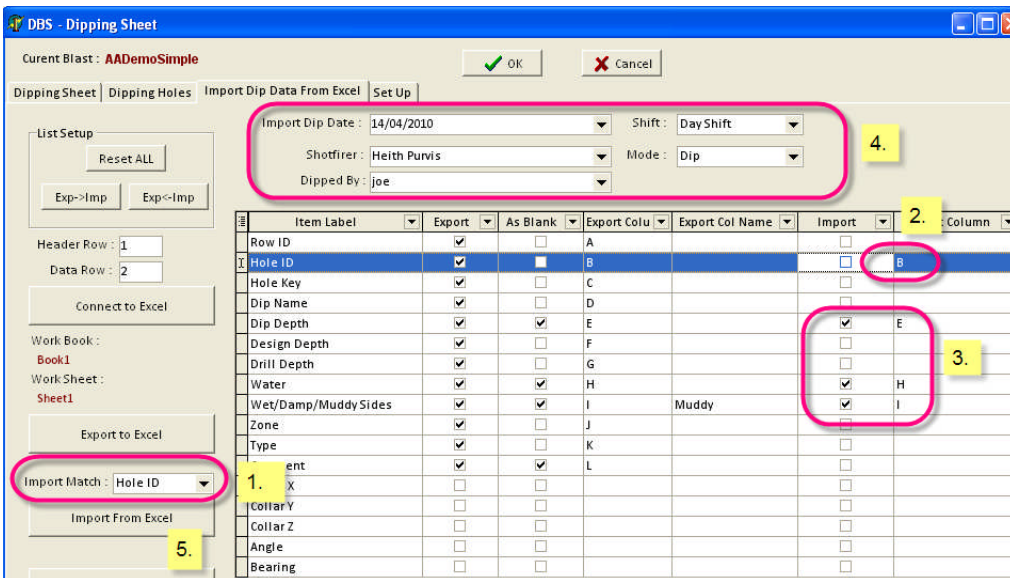


1	A	B	C	D	E	F	G	H	I	J	K	L
Row ID	Hole ID	Hole Key	Dip Name	Dip Depth	Design De	Drill Depth	Water	Muddy	Zone	Type	Comment	
2	A	A1	{B386CD83-A1			19	17.5					
3	A	A2	{DE614381-A2			18	17.7					
4	A	A3	{30572647-A3			23.5	13					
5	A	A4	{975B3E80-A4			18	13.3					
6	A	A5	{DEE4F3C4-A5			18	18					
7	A	A6	{4690CA3-A6			18	18					
8	A	A7	{AEEE1519-A7			18	18					
9	B	B1	{817718CE-B1			18	18					
10	B	B2	{91EA7D12-B2									
11	B	B3	{AB5BA108-B3									
12	B	B4	{049C5EC8-B4									
13	B	B5	{449CDA16-B5									
14	B	B6	{1E6C2893-B6			18	18					
15	C	C1	{42D8A22E-C1			18	18					
16	C	C2	{E3E0C90D-C2			18	18					
17	C	C3	{756BF838-C3			18	18					
18	C	C4	{0D2A20B2-C4			18	18					
19	C	C5	{5A63CB52-C5			18	18					
20	C	C6	{AF915BF8-C6			18	18					
21	C	C7	{C777F68D-C7			18	18					
22	D	D1	{D37D791A-D1			18	18					
23	D	D2	{C52100F6-D2			18	18					
24	D	D3	{782ABE55-D3			18	18					
25	D	D4	{0735D1E0-D4			18	18					
26	D	D5	{2FEB5F15-D5			18	18					
27	D	D6	{5EE51B59-D6			18	18					
28	E	E1	{73D33BC9-E1			18	18					
29	E	E2	{CFD5B70B-E2			18	18					
30	E	E3				18	18			test		
31	E	E4				18	18					
32	E	E5				18	18			test		
33	E	E6				18	18					
34	E	E7				18	18					

Columns left blank for data entry

Hole Key uniquely identifies the blasthole

Once the data is dumped to the spreadsheet, the field collected data can be added. The spreadsheet format is handy if you wanted to take the data into the field and use a PDA or Tablet computer to collect the data.



To import the collected dip data..

1. Set the Hole Match type
2. Identify which column holds the Hole Match data
3. Identify which columns of data you want to import.
4. Update the Dip Sheet header data
5. Import the data.

Once imported, check that the Dip Sheet has been created OK.

That's it!

Why not consider using the power of a spreadsheet to assist in the data collection and data entry of dipping data. Often the "cost" of entering this valuable data is not considered worth the effort. Yet maintaining control of the Drill and Blast process means that you must have this measurement data available.