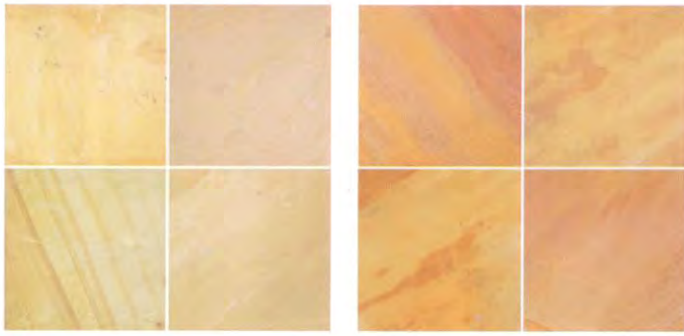


Natural SANDSTONE Supplies



NATURAL



Mint

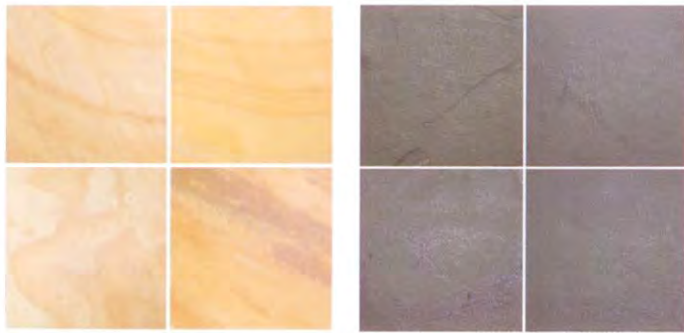
Drifting

PREMIUM



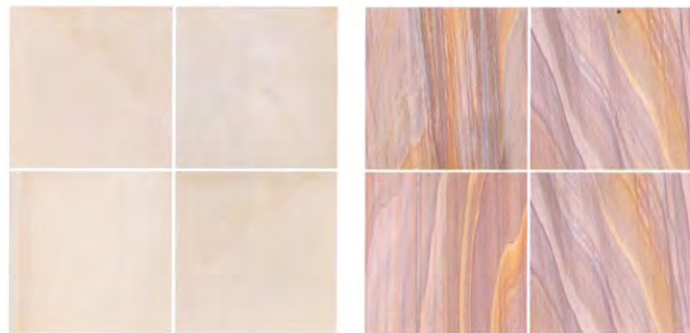
Teakwood *(Honed)*

Brighton Sands
(Sand Blasted)



Country Cameo

Black Limestone

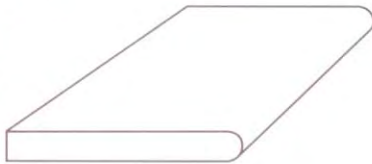


Ivory *(Matt Polished)*

Rainbow *(Honed)*

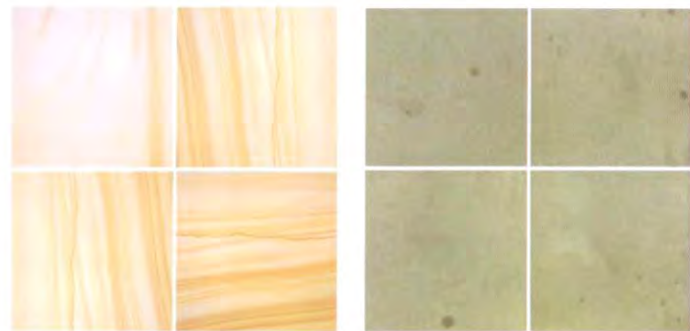
BULLNOSE/STEPS

- 600 x 300 x 20mm
- 600 x 300 x 40mm
- 600 x 400 x 40mm
- 500 x 500 x 40mm
- 800 x 400 x 40mm



Stocked sizes. Selected colours only. Large sizes on request.

Note: Colours shown are indication only. Natural sandstone colours can vary between batches. * Available on request.



Grampian Sand
(Matt Polished)

Bluestone

STONE VARIATION:

Laying of stone constitutes acceptance of our product. Stone is a natural product, cut from the ground and mostly hand finished. Colour, shade and size variations can occur as stone naturally contains veins, fossils, cavities, flakes, chips, blemishes and other imperfections. These are what gives stone its natural character and appeal.

LAYING STONE:

We recommend that stone be installed by a tradesman who is experienced at laying stone. A selection of stone from each pallet on site should be used to ensure the correct blend is laid.

SEALING:

When the stone has been laid, grouted, cleaned and completely dry, we recommend applying a penetrating sealer. This is required in order to assist in protecting the stone and grout from staining, efflorescence and other damages potentially caused by water entering the stone. Sealing will not stop stains but will allow you time to clean the stain before it has a chance to soak into the stone. It is important that you clean up spills and treat them immediately. Visit our website www.luxurystone.com.au for a list of our recommended sealing products. We advise regular cleaning to maintain the appearance in addition to sealing of your stone paving.

SALT CONDITIONS:

Untreated stone can be susceptible to deterioration in salt conditions as the salt attacks the binding of the particles. Special care should be taken when using sandstone around a salt-water pool or in seaside areas. In this instance we advise professional applicators seal the stone. (Inquire within for recommended applicators)

Available from: